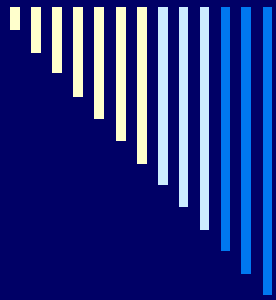


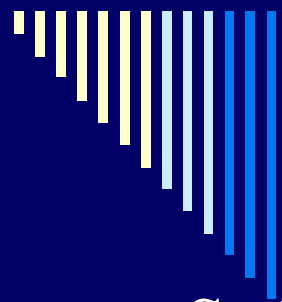
Re-evaluation of Recreational Uses in the Engineered Channels of the Los Angeles River Watershed

September 27, 2010



Presentation Outline

- Background
- Scope of the Project
- Potential Outcomes
- Preliminary Schedule
- Stakeholder Involvement



Background

□ Stakeholder Concerns

- Engineered channels unsafe for recreation during storm events

□ Stakeholder Efforts

- Provide increased recreational opportunities in urban streams through restoration



Background (cont'd)

- 2003 Basin Plan Amendment (*Resolution No. 2003-10*)
 - Suspension of REC uses and associated bacteria water quality objectives during & immediately following storm events

- 2005 Basin Plan Amendment (*SB Resolution No. 2005-0015*)
 - Removal of REC-1 Reach 1 of Ballona Creek
 - Development & designation of sub-category of REC-1 Reach 2 of Ballona Creek

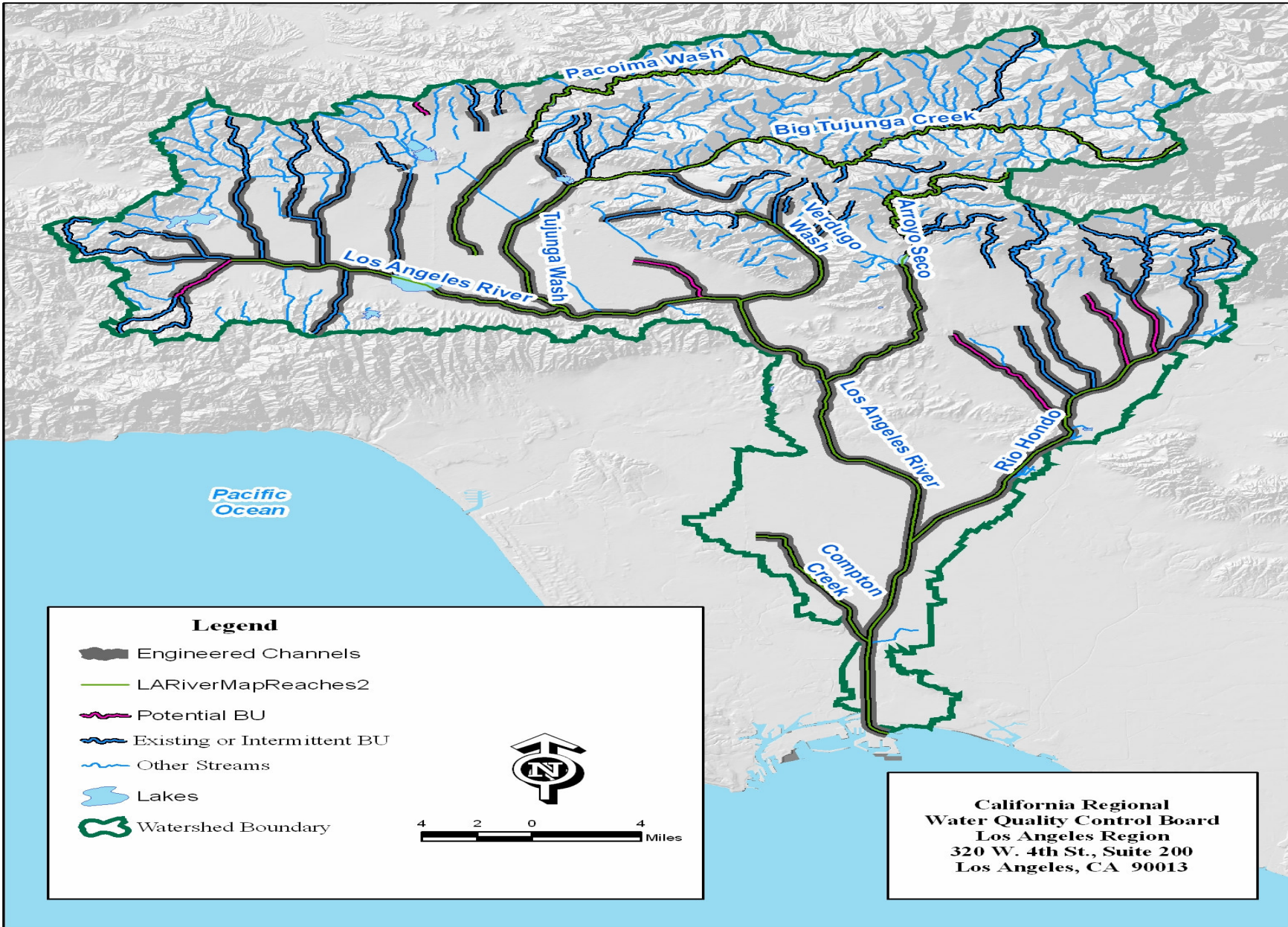
- 2008-10 Triennial Review
 - Recreational use evaluation prioritized



Scope of Proposed Project

- Re-assess actual and potential REC-1 uses of engineered waterbodies in the Los Angeles River Watershed
 - Evaluate magnitude and frequency of REC-1 use in Reaches 1-6 of Los Angeles River
 - Determine nature and extent of recreational use in all engineered tributaries

Los Angeles River Watershed Engineered Channels





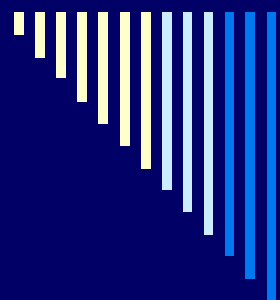
Components of REC Use Assessment

- Field Monitoring
 - Visual observations
 - Photo documentation
 - WQ Monitoring/Measurements
 - On-site user surveys

- Data/Information collection & analysis
 - water quality, flow, water levels, hydrologic modifications

- Recreational Use Surveys (electronic)

- Review of plans for future recreational use



Potential Outcomes of REC Use Re-evaluation

- ❑ Determination that :
 - ❑ REC-1 use should be modified (sub-category)
 - ❑ REC-1 use should be removed
 - ❑ REC-1 use is a potential use
 - ❑ REC-1 use is existing



Developing Use Sub-categories

- States can adopt sub-categories of a use to further refine designated uses
- Existing uses can be sub-categorized
- Regional Board sub-categorized REC-1 use in Reach 2 of Ballona Creek
 - Limited REC-1 (LREC-1)



Removing a Designated Use

- ❑ Federal regulations provide conditions under which a designated use may be removed
- ❑ EPA guidance provides additional factors to be considered in determining REC-1 is not an existing use
- ❑ Existing uses cannot be removed



Determining Potential Uses

- To confirm a potential use, per the Basin Plan, consider (not limited to):
 - Plans for future use
 - Potential for future use
 - Designation as a Regional Board goal
 - Public desire for future use



Determining Existing Uses

- CWA (1972) Rebuttable Presumption
- To confirm or establish an existing use, per EPA:
 - Use present in a waterbody on or after November 28, 1975
 - Water quality sufficient to support such uses on or after November 28, 1975



Summary of Potential Outcomes

Outcome	Existing Use	Potential Use
Sub-categorize	✓	✓
Remove	Not applicable	✓
Confirm	✓	✓
Upgrade	Not applicable	✓



Preliminary Schedule

- Field Reconnaissance & Fall Use Survey?
 - Oct 2010 – Dec 2010

- Winter Use Survey
 - Dec 2010 – Feb 2011

- Spring Use Survey
 - Mar 2011 – May 2011

- Summer Use Survey
 - June 2011 – mid Sept 2011



Preliminary Schedule (cont'd)

- Development of LA River RECUR Report and any proposed Basin Plan Amendments
 - Fall 2011

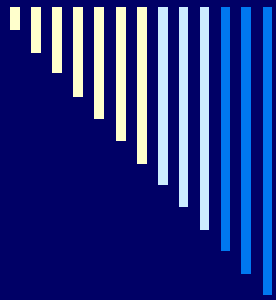
- Noticing of Report and any proposed Basin Plan Amendments
 - Winter 2011/12

- Board consideration of any proposed Basin Plan Amendments
 - Spring 2012



Stakeholder Participation

- LAR REC Use Re-assessment (RECUR) Committee
 - Coordinate recreational use surveys
 - Collect and compile relevant data and information
- Field work
 - Conduct field surveys
- Workshops
 - Quarterly to receive updates and provide input
- Comments



Questions? Comments?

Ginachi Amah

gamah@waterboards.ca.gov

(213) 576-6685